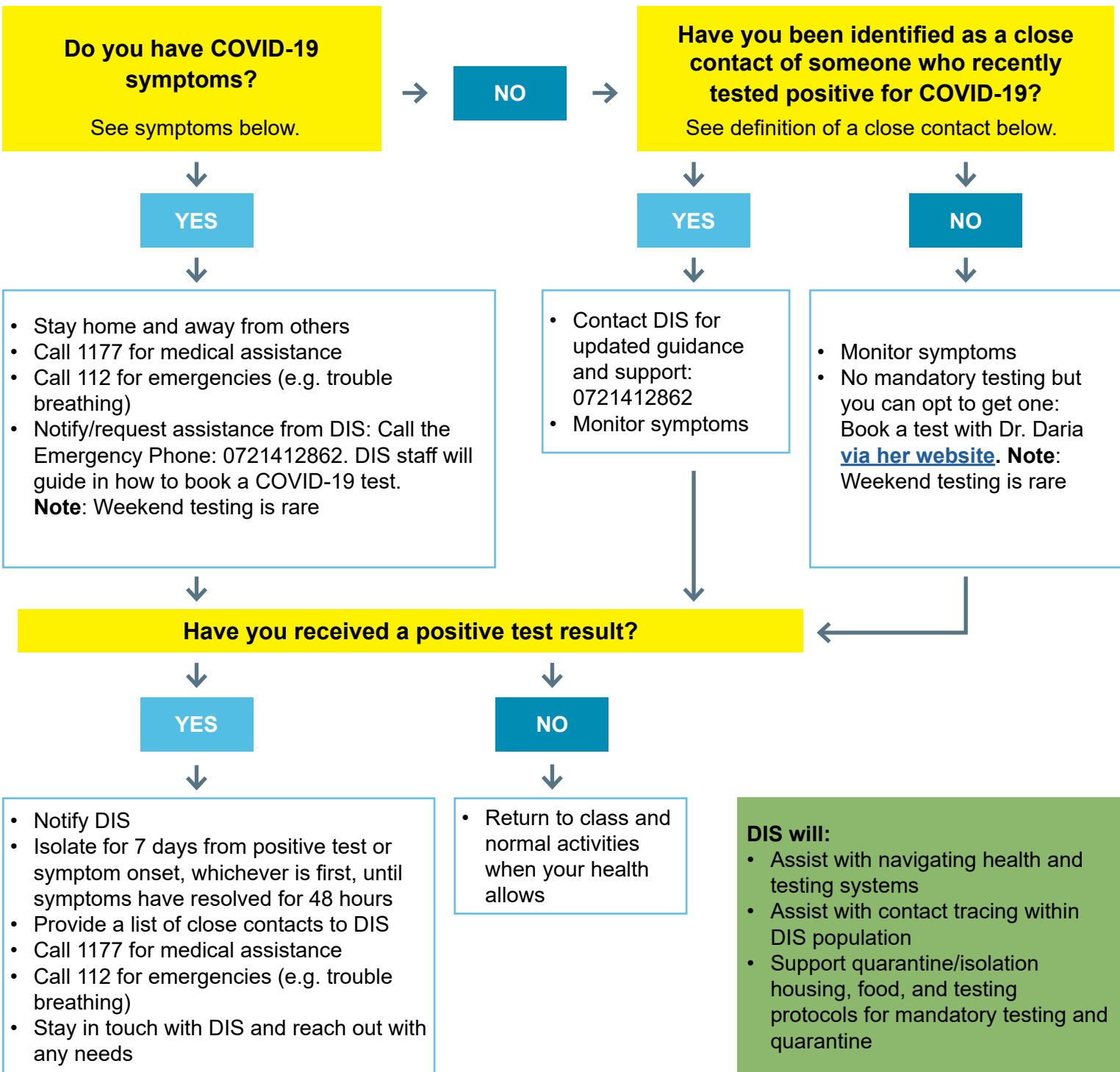


DIS COVID-19 Flowchart (Sweden)

This information is provided to assist students based on official Swedish public health protocols available here:

[Official information on COVID-19 from the Swedish authorities](#)

These may be updated from time to time and this chart may not always reflect the most recent guidance.



COVID-19 symptoms include:

Dry cough, high temperature, breathing difficulties, sore throat, headache, muscle pain, runny nose, blocked nose, nausea.

What is a close contact?

Close contacts are defined as persons who...

- Have had close contact (at a distance of less than two meters) for 15 minutes or more in the 48 hours before the person who tested positive first experienced symptoms, or in case the person who tested positive is asymptomatic, in the 48 hours preceding the positive test result

Note: If someone you live with is being tested for COVID-19 due to being identified as a close contact or because they are symptomatic, you must also stay home awaiting their test results.